



The "clever" hand towel



At last, a hand towel that actually stays in place!

The Clever Hand Towel is a truly useful home décor project that quickly becomes a must-have. You'll enjoy making it again and again as the seasons change.

This design is inspired by existing concepts, but reimagined with added volume. I introduced gathers to give it depth and an elegant look. If you've never made gathers before, don't worry: everything is explained step by step. You'll see, it's easy!

The Clever Hand Towel:

- hangs easily;
- detaches in seconds;
- can be personalized to add a decorative touch to your kitchen;
- stays put, even when little hands are in a hurry.

Play with colors, prints, or textures to make it your own and match your interior.

MATERIALS & SUPPLIES

- 50 cm x 50 cm for the main decorative fabric. Imperial: 19.7" x 19.7" (includes a safety margin)
- 50 cm x 50 cm fusible interfacing (optional unless your fabric is thin). Imperial: 19.7" x 19.7"
- For a handle made with a contrasting fabric different from the decorative fabric: 25 cm x 25 cm. Imperial: 9.8" x 9.8"
- 1 tea towel or a thin towel (bamboo terry), width between 35 cm and 45 cm. Imperial: 13.8" – 17.7". Length as desired. (in the pattern example, a 45 cm x 75 cm towel is cut in half, giving 45 cm x 37.5 cm. Imperial: 17.7" x 13.8")



THANK YOU FOR SUPPORTING INDEPENDENT CREATORS

This sewing pattern is a creation of MYO Couture, available as a free download on the website MAKEYOUROWN.FR.

It is intended for personal use only and may not be reproduced, shared, or redistributed in any form, whether digital or printed.

The pattern and its instructions may not be copied, altered, sold, or used for video tutorials, online courses, or any other educational material.

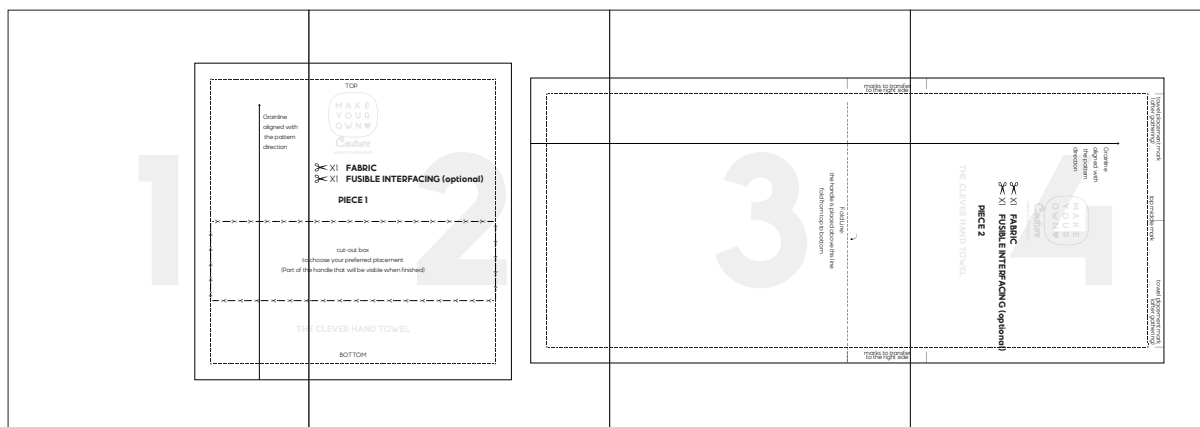
Items made from this pattern may be sold on a small scale (up to 50 per year), at craft fairs, or in small online shops, provided that "Pattern by MYO COUTURE" is clearly credited.

Resale as a distributor, or production by a third party or workshop, is strictly prohibited.

For any mass production or industrial use, a license is required.

All rights, including copyright, are expressly reserved by Make Your Own Couture / MYO Couture.

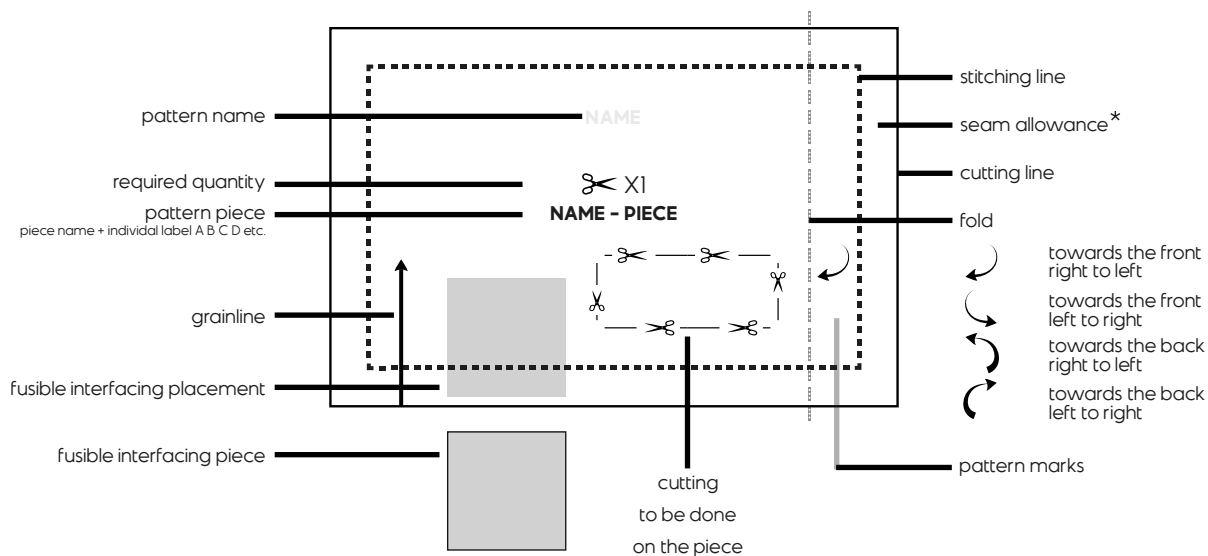
Pattern Assembly:



For printing: Set your printer to print full page at 100% scale.



Check that the square shown measures exactly 5 cm (imperial: 1.97 in).



* ABOUT OUR SEAM ALLOWANCES

Our sewing patterns are designed using the metric system, with a 1 cm seam allowance, which equals 0.4 in. The standard seam allowance in the imperial system is 3/8 in, which corresponds to 0.9525 cm.

If you prefer to use the imperial system, we recommend keeping the seam allowance at 1 cm and using it with the 3/8 in setting. The difference of less than 0.05 mm will not affect the final result.

video tutorial



*scan or click
the QR code*

In this tutorial, a store-bought tea towel measuring 70 × 45 cm (imperial: 27.6" × 17.7") is cut in half lengthwise to obtain a piece 35 × 45 cm (imperial: 13.8" × 17.7").

Other towel sizes can be used, or a fully handmade piece, provided that a hem is made on three sides beforehand.

STEP 1 – Preparing the Pieces

Cut your pieces and transfer the markings indicated on the pattern (on the right side of the fabric).

An arrow indicates the grainline.

Also pay attention to the orientation if you are using patterned fabric.

For Piece 1 (the handle), you can cut out the window to place the pattern piece at a specific spot on the fabric.

This section in the box will be visible once the handle is assembled.

STEP 2 – Shaping the Handle

Place the fabric wrong side up.

Fold the piece in half lengthwise (top to bottom) and press to mark the fold.

Open the piece again and fold the top edge down to meet the first fold, and do the same for the bottom edge.

Refold everything along the original crease to form a strip 5 cm high × 20 cm wide. Imperial 1.97" × 7.9".

Hold the folds in place with clips or pins.

Using a sewing machine, stitch along the two long edges, 5 mm from the edge (imperial 3/16"), using a long stitch length (4–5 mm). Imperial 3/16"–1/5" or long stitch.

STEP 3

Take Piece 2, right side up, and place the handle between the edge markings, aligning edges, and secure with clips or pins (the handle is longer than the piece; this is normal).

Sew along the seam allowance (5 mm from the edge / imperial 3/16") to hold it in place.

Fold the piece in half top to bottom, so the handle is now sandwiched between the two layers of fabric.

Sew both sides, about 5 cm from the fold, 1 cm from the edge (up to the edge of the handle). Imperial 3/8".

Set aside.

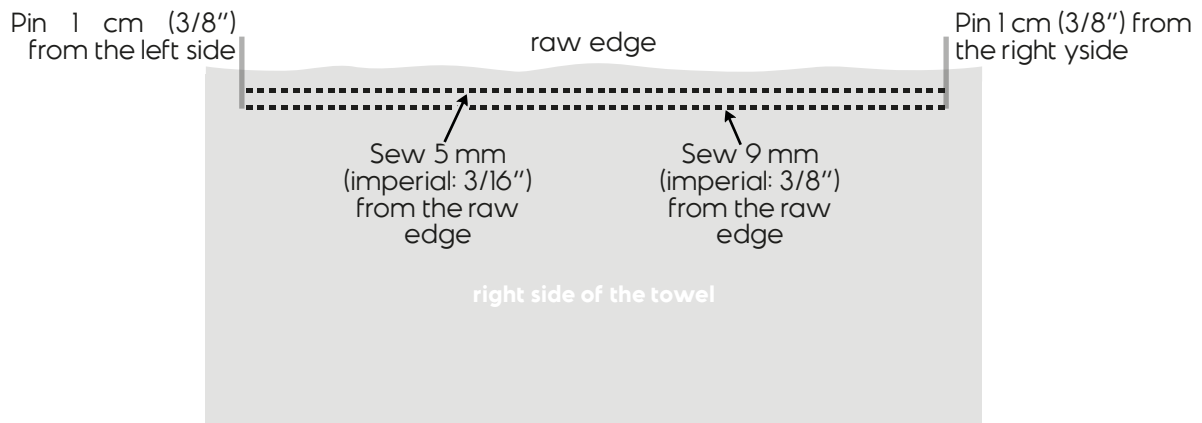
STEP 4 – Preparing the Towel

Take the towel. You will gather the top edge, the raw edge.

To do this, reduce the sewing machine tension (between 0 and 1) and set the stitch length to the maximum (5 mm / imperial: 3/16").

Leave long threads at the beginning and end of the seam (hold the threads taut for the first 3–4 stitches).

Sew two parallel rows of straight stitches, 5 mm (imperial: 3/16") and 9 mm (imperial: 3/8") from the raw edge, starting and stopping 1 cm (0.3937") from each end.



do not backstitch at the beginning or end of the seam, otherwise it will be impossible to gather!

STEP 5 – Assembly

Take Piece 2 and open it so that the right side is facing you at the top notches.

Take the towel, right side up, with the gathered lines at the top, and place the left edge inside the marking on Piece 2 (about 1 cm / imperial: 3/8" from the edge).

Pin in place and secure the threads by wrapping them around the pin in a figure-eight.

Now pull the two bobbin threads on the opposite side (right side of the towel) and slide the towel to the left while holding the bobbin threads. This will gather the fabric, which should reach the inside of the other marking (1 cm / imperial: 3/8" from the right edge).

Carefully align the raw edges and secure the end with a pin; wrap the threads around the pin in a figure-eight to lock the gathers and distribute them evenly between the two markings. Secure with several pins.

Sew a seam 9 mm (imperial: 3/8") from the edge.

STEP 6

Bring the towel together at the sides and fold the bottom edge over, aligning it with the top edge (the towel is now sandwiched between the two layers).

Hold with clips or pins and sew 1 cm (imperial: 3/8") from the edge.

Fold the 1 cm (imperial: 3/8") side seam allowances toward the center and sew a short seam along a few centimeters, 1.2 cm (imperial: 1/2") from the edge.

The "clever" hand towel

STEP 7

Turn the project right side out through one of the open sides and press.

At the openings, make sure to press the seam allowances inward, aligning the edges, and hold in place with clips or pins.

STEP 8 – Closing the Openings

Now topstitch around your rectangle, which will also close the openings.

Determine which side will be visible once the towel is hanging, because a topstitch on the right side (bobbin thread) is always more aesthetically pleasing than a stitch on the wrong side (bobbin visible).

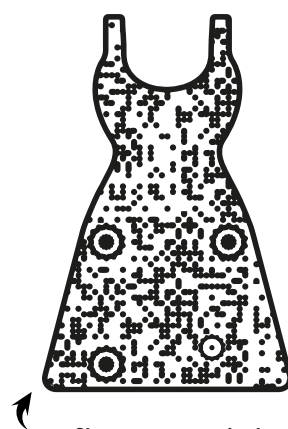
You may need to turn the handle toward you to make topstitching easier.

Sew 2–5 mm (1/16"–3/32") from the edge, depending on the desired effect, and start under the handle for a discreet start and end of the seam.

STEP 9 – Finishing

Press one last time and fold the handle to the other side.

*Congratulations!
You've finished your
clever hand towel.
Go ahead and hang it up!*

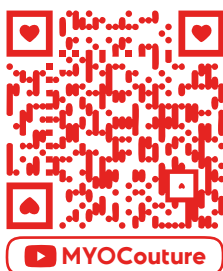


Share your creation!

MAKEYOUROWNCOUTURE

MYOCOUTURE

*quick tutorial:
how to hang
your clever hand towel*



MYOCouture

*scan or click
the QR code*